

# Environmental Team Services for Contract No. SS H504 Design and Construction of Chai Wan Government Complex and Vehicle Depot

## 45<sup>th</sup> Monthly EM&A Report (July 2025)

**Certified by:**



---

Fredrick Leong  
Environmental Team Leader (ETL)  
Aurecon Hong Kong Limited

**Date:**

---

11 August 2025

**Verified by:**



---

Claudine Lee  
Independent Environmental Checker (IEC)  
Meinhardt Infrastructure and Environment Limited

**Date:**

---

11 August 2025

**Contract No. SS H504  
Design and  
Construction of Chai  
Wan Government  
Complex and Vehicle  
Depot**

45<sup>th</sup> Monthly EM&A Report

**Yau Lee Construction Co, Ltd**

2025-08-05

**aurecon**

*Bringing ideas  
to life*

**aurecon**



# Document control record

Document prepared by:

**Aurecon Hong Kong Limited**

Unit 1608, 16/F, Tower B, Manulife Financial Centre,

223 – 231 Wai Yip Street, Kwun Tong, Kowloon

Hong Kong S. A. R.

**T** +852 3664 6888

**F** +852 3664 6999



**E** hongkong@aurecongroup.com

**W** aurecongroup.com

A person using Aurecon documents or data accepts the risk of:

- a) Using the documents or data in electronic form without requesting and checking them for accuracy against the original hard copy version.
- b) Using the documents or data for any purpose not agreed to in writing by Aurecon.

Document control						aurecon
<b>Report title</b>		45th Monthly EM&A Report				
<b>Document ID</b>		MMR	<b>Project number</b>		P520574	
<b>File path</b>		520574-0000-PLN-NM-00045 [0]				
<b>Client</b>		Yau Lee Construction Co, Ltd				
<b>Client contact</b>			<b>Client reference</b>			
<b>Rev</b>	<b>Date</b>	<b>Revision details/status</b>	<b>Author</b>	<b>Reviewer</b>	<b>Verifier (if required)</b>	<b>Approver</b>
0	5 August 2025	Submitted to IEC	Various	K.Chau		FL
<b>Current revision</b>		<b>0</b>				

Approval			
<b>Reviewer's signature</b>		<b>Approver's signature</b>	
			
<b>Name</b>	Keith Chau	<b>Name</b>	Fredrick Leong
<b>Title</b>	Associate, Environmental	<b>Title</b>	Environmental Team Leader



# Contents

Executive Summary .....	1
1 Introduction.....	3
2 Project Information.....	4
3 Environmental Monitoring Requirements.....	7
4 Implementation Status on Environmental Mitigation Measures .....	11
5 Monitoring Results.....	12
6 Environmental Site Inspection .....	13
7 Environmental Non-conformance.....	13
8 Future Key Issues.....	15
9 Review of EM&A Data and EIA Predictions .....	16
10 Conclusion .....	20

## Appendix

Appendix 1	Construction Programme
Appendix 2	Project Organization Chart and Contact Details
Appendix 3	Monitoring Programme for Reporting Period
Appendix 4	Calibration Certificates
Appendix 5	Event and Action Plan
Appendix 6	Implementation Status of Mitigation Measures
Appendix 7	Monitoring Results with Graphical Presentations
Appendix 8	Waste Flow Table
Appendix 9	Joint site inspection record for Reporting Period
Appendix 10	Monitoring Schedule for the Next Month
Appendix 11	Notification of Environmental Quality Limits Exceedance
Appendix 12	Cumulative Complaint / Enquiry Log, Summaries of Complaints and Enquiries

# Executive Summary

Aurecon Hong Kong Limited (Aurecon) was commissioned by the Yau Lee Construction Co, Ltd (Yau Lee) to undertake the role of Environmental Team (ET) for carrying out the environmental monitoring and audit (EM&A) works for the “Contract No. SS H504 Design and Construction of Chai Wan Government Complex and Vehicle Depot (The Project).

An Environmental Permit (EP) No. EP-505/2015 was issued by the Environmental Protection Department (EPD) on 17 December 2015 for the construction of this project based on the Environmental Impact Assessment (EIA) Report (Register No: AEIAR-191/2015) approved by the EPD. The latest EP No. EP-505/2015/A was subsequently issued by the EPD on 8 November 2019 based on the documents (including an Environmental Review Report (ERR)) for the application of Variation of Environmental Permit.

The construction phase and EM&A programme of the Project commenced on 25 November 2021.

This 45<sup>th</sup> Monthly EM&A Report presents the EM&A works conducted from 01 July 2025 to 31 July 2025 in accordance with the EM&A Manual.

## Summary of Construction Works undertaken during Report Period

The major construction works undertaken during the reporting period include: (To be updated)

- Superstructure works has been completed in mid-Mar 2025
- All MiC modules and precast elements has been finished installation
- Architectural finishing works and BS installation works

## Environmental Monitoring and Audit Progress

A summary of the monitoring activities in this reporting period is listed below:

- |   |         |
|---|---------|
| - Construction Noise Monitoring during normal weekdays at each monitoring station | 5 times |
| - Joint Environmental Site Inspection   | 5 times |

## Noise

5 sets of 30-minute construction noise measurement were carried out at each monitoring stations during normal weekdays of the reporting period. No exceedance of Action and Limit Levels of construction noise was recorded during the reporting period.

## Environmental Site Inspection

Joint environmental site inspections were carried out on 2, 10, 16, 24, and 31 July 2025. The joint environmental site inspection was carried out by the representatives of the Engineer's Representative (ER), the Contractor, IEC and the ET on 16 July 2025. The Contractor has generally implemented the mitigation measures as recommended.

### **Environmental Exceedance/Non-conformance/Compliant/Summons and Prosecution**

No exceedance of the Action and Limit Levels of construction noise was recorded at designated monitoring stations during the reporting period.

No non-compliance event was recorded during the reporting period.

No environmental complaint and no summons/prosecutions were received in this reporting period.

EPD conducted general site inspection on XX July 2025. (To be updated) No special findings were identified during the inspection.

### **Future Key Issues**

Works to be undertaken in the next month include: (To be updated)

- 
- Architectural finishing works and BS installation works
  - Preparation works for Gov. inspection works (WSD, FSD, DSD)
- 

Potential environmental impacts arising from the above construction activities are mainly associated with dust, construction noise, site runoff and waste management.

# 1 Introduction

- 1.1.1 Aurecon Hong Kong Limited (Aurecon) was commissioned by the Yau Lee Construction Co, Ltd (Yau Lee) to undertake the role of Environmental Team (ET) for carrying out the environmental monitoring and audit (EM&A) works for the “Contract No. SS H504 Design and Construction of Chai Wan Government Complex and Vehicle Depot (The Project).

## 1.2 Purpose of this Report

- 1.2.1 This is the forty-fifth EM&A report which summarises the impact monitoring results and audit findings for the EM&A programme during the reporting period from 01 July 2025 to 31 July 2025.

## 1.3 Structure of the Report

- 1.3.1 The structure of the report is as follows:

### Section 1 - Introduction

- details the background, purpose and structure of the report.

### Section 2 - Project Information

- summarises background and scope of the Project, site description, project organization and contact details, construction programme, the construction works undertaken and the status of Environmental Permit(s)/License(s) during the reporting period.

### Section 3 - Environmental Monitoring Requirement

- summarises the monitoring parameters, monitoring programmes, monitoring methodologies, monitoring frequency, monitoring locations, Action and Limit Levels, Event/Action Plans.

### Section 4 - Implementation Status on Environmental Mitigation Measures

- summarises the implementation of environmental protection measures during the reporting period.

### Section 5 - Monitoring Results

- summarises the monitoring results obtained in the reporting period.

### Section 6 - Environmental Site Auditing

- summarises the audit findings of the weekly site inspections undertaken within the reporting period.

### Section 7 - Environmental Non-conformance

- summarises any monitoring exceedance, environmental complaints and environmental summons within the reporting period.

### Section 8 - Future Key Issues

- summarises the impact forecast and monitoring schedule for the next reporting month.

### Section 9 - Review of EM&A Data and EIA Predictions

- compares and contrasts the EM&A data in the month with the EIA predictions and annotates with explanation for any discrepancies.

### Section 10 - Conclusions

## 2 Project Information

### 2.1 Background

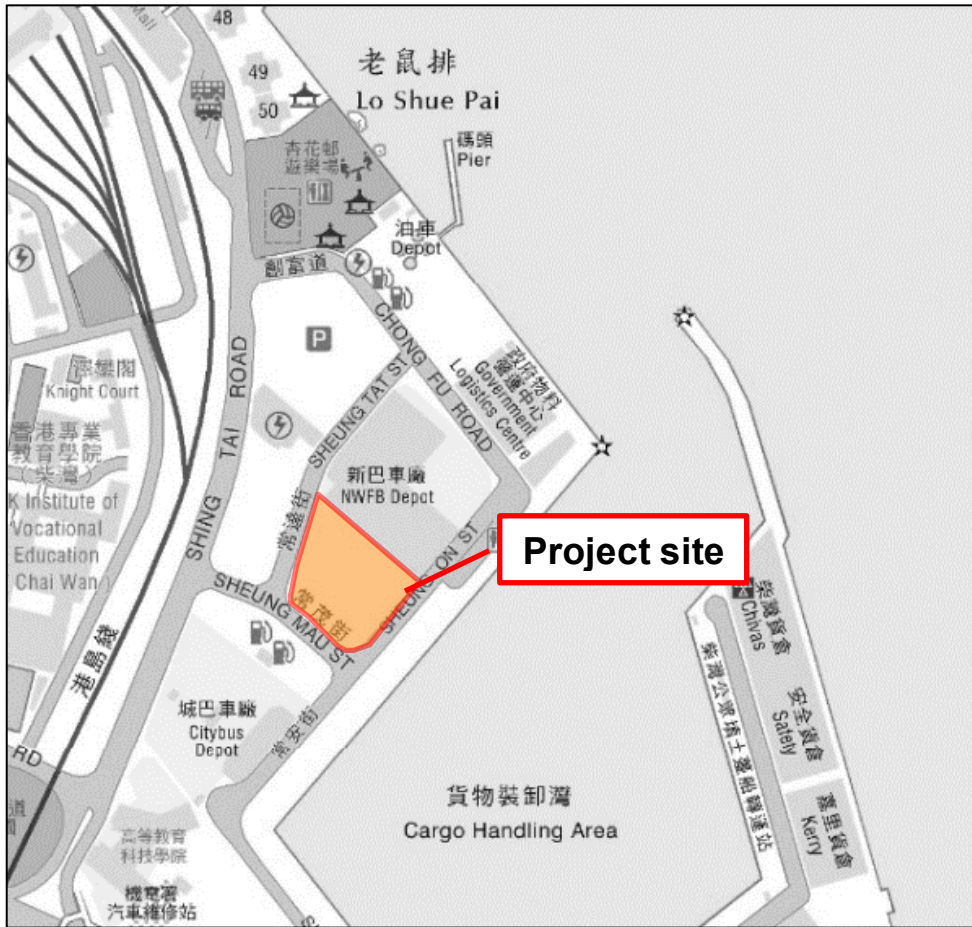
2.1.1 On 5 October 2015, the Environment Impact Assessment (EIA) for the proposed “Chai Wan Government Complex and Vehicle Depot” (AEIAR-191/2015, hereafter referred to as “the Project”) was approved and an Environmental Permit (EP) (EP-505/2015) for the construction of the Project was issued. The latest EP No. EP-505/2015/A was subsequently issued by the EPD on 8 November 2019 based on the documents (including an Environmental Review Report (ERR)) for the application of Variation of Environmental Permit.

2.1.2 The construction phase and EM&A programme of the Project commenced on 25 November 2021.

### 2.2 Site Description

2.2.1 The scope of works of the Project, which is a Designated Project under the EIA Ordinance (EIAO), will construct joint user building comprising the government office, store, laboratory, transport pool and vehicle depot facilities in Chai Wan District. The Site is bounded by NWFB Depot to the north, Sheung On Street to the east, Sheung Mau Street to the south and Sheung Tat Street to the west. A layout plan of the Project is provided in **Figure 1-1**.

**Figure 1-1 A layout plan of the Project**



## 2.3 Construction Activities

2.3.1 A summary of the major construction activities undertaken in this reporting period is shown in **Table 2.1** and the construction programme is illustrated in **Appendix 1**.

**Table 2-1 Major Construction Activities Undertaken in the Reporting Period**

Construction Activities Undertaken (To be updated)
- Superstructure works has been completed in mid-Mar 2025
- All MiC modules and precast elements has been finished installation
- Architectural finishing works and BS installation works

## 2.4 Project Organisation

2.4.1 The Project organization chart and contact details are shown in **Appendix 2**.

## 2.5 Status of Environmental Approval Document

2.5.1 A summary of the relevant valid permits, licences, and/or notifications on environmental protection for this Project since the granting of the EP is presented in **Table 2.2**.

**Table 2-2 Summary of the relevant valid permits, license, and/or notification on environmental protection**

Permit / Licenses / Notification	Reference	Validity Period	Remark
Environmental Permit (EP)	EP-505/2015/A	Throughout the Contract	Permit granted on 8 November 2019
Notification of Construction Works as required under Air Pollution Control (Construction Dust) Regulation	469716	Throughout the Contract	Approved on 21 July 2021
Registration of Waste Producer under Waste Disposal Ordinance	7041313	Throughout the Contract	Approved on 13 August 2021
Registration as Chemical Waste Producer	5213-163-Y2782-01	Throughout the Contract	Approved on 24 August 2021
Effluent Discharge License under Water Pollution Control Ordinance	WT00038924-2021	30 September 2026	Approved on 9 December 2021

# 3 Environmental Monitoring Requirements

## 3.1 Noise Monitoring Locations

3.1.1 The noise monitoring locations in approved EM&A Manual are summarised in **Table 3-1** and shown in **Figure 3-1**.

**Table 3-1 Noise Monitoring Station in Approved EM&A Manual**

Noise Monitoring ID	Proposed Noise Monitoring Location	Remark
NM1	Ground Floor at Heng Fa Chuen Block 50	-
NM2b	Pedestrian road at Shing Tai Road	*
NM3	Rooftop of THEi Campus	-

Remark: \* - Hong Kong Institute of Vocational Education (Chai Wan) - Academic Block (NM2) is the noise monitoring stations for the construction phase EM&A programme as identified in the approved EM&A Manual for the Project. The access to NM2 and Knight Court (as a VTC Senior Quarters and NSR3 in approved EIA) were denied. A search for alternative noise monitoring locations along Shing Tai Road and Sheung Mau Street was carried out during the site visit on 4 October 2021.

Lamp Post no. 47447 at Sheung Mau Street (NM2a), which is located between project site and original noise monitoring location, Hong Kong Institute of Vocational Education (Chai Wan) - Academic Block (NM2), is found suitable and available to be an alternative noise monitoring location for NM2. Also, NM2a, which has a direct line of sight towards project site (where construction works will be carried out and likely to have noise impacts), is located closer to project site than NM2 and thus considered as a representative noise monitoring location. Monitoring position at NM2a is proposed at 2m above ground due to security concerns and minimize the road traffic noise contribution. Noise measurement at NM2a will be considered as free-field and a correction of +3dB(A) would be made to the noise monitoring results. The alternative location of NM2a, were therefore proposed and agreed by the Independent Environmental Checker (IEC).

Due to the adjustment of the location of NM2 to NM2a, the measured noise levels at NM2a would represent the noise levels at NM2.

To respond to the comment raised by EPD on monitoring location of NM2a by email dated 23 May 2022 and site meeting on 6 June 2022, the monitoring location of NM2a was adjusted to the pedestrian road at Shing Tai Road (NM2b) which is located between project site and original noise monitoring location, Hong Kong Institute of Vocational Education (Chai Wan) - Academic Block (NM2). Compared with NM2a, NM2b is far away from the traffic light and therefore should be able to minimise the traffic noise issue. This arrangement was started from 28 June 2022 and has been agreed by the Independent Environmental Checker (IEC). Noise measurement at NM2b will be considered as free-field and a correction of +3dB(A) would be made to the noise monitoring results.

Due to the adjustment of the location of NM2a to NM2b, the measured noise level at NM2b would represent the noise levels at NM2.

**Figure 3-1 Location of Noise Monitoring Stations (NM1, NM2b and NM3)**



### 3.2 Monitoring Parameters, Frequency and Duration

3.2.1 Weekly construction noise monitoring was conducted in accordance with the requirements stipulated in the EM&A Manual. The monitoring programme for this reporting period is shown in **Appendix 3**.

3.2.2 **Table 3-2** summarizes the monitoring parameters, frequency and duration of the impact noise monitoring.

**Table 3-2 Noise Monitoring Parameters, Period and Frequency**

Time Period	Parameters
Daytime on normal weekdays (0700-1900 hrs)	$L_{eq}(30 \text{ mins})$ , $L_{10}(5 \text{ mins})$ and $L_{90}(5 \text{ mins})$
Evening time on all days (1900-2300 hrs) and Holidays (including Sundays) during daytime and evening (0700-2300 hrs)	$L_{eq}(5 \text{ mins})$ , $L_{10}(5 \text{ mins})$ and $L_{90}(5 \text{ mins})$
All days during the night-time (2300-0700 hrs of the next day)	$L_{eq}(5 \text{ mins})$ , $L_{10}(5 \text{ mins})$ and $L_{90}(5 \text{ mins})$

### 3.3 Monitoring Equipment

3.3.1 Noise measurements were conducted in accordance with the calibration and measurement procedures as stated in Annex – General Calibration and Measurement Procedures of Technical Memorandum on Noise from Construction Work other than Percussive Piling (GW-TM) issued under the Noise Control Ordinance (NCO) (Cap.400).

3.3.2 The sound level meter and calibrator used for the noise measurement, as listed in **Table 3-3**, complies with IEC 651: 1979 and 804:1985 (Type 1) specification. The calibration certificates of the sound level meter and calibrator are given in **Appendix 4**.

**Table 3-3 Noise Monitoring Equipment**

Monitoring Station	Monitoring Equipment (Sound Level Meter and Calibrator)
NM1	Sound Level Meter: Rion NL 52(s/n: 00331005)
NM2b	Calibrator: Larson Davis Cal 200(s/n: 10227)
NM3	

3.3.3 Immediately prior to and following the noise measurements, the accuracy of the measurement equipment was checked using an acoustic calibrator generating a known sound pressure level at a known frequency. Measurements were accepted as the calibration level from before and after the noise measurement agree to within 1.0 d(B).

3.3.4 A portable wind speed meter shall be used for measuring wind speeds in m/s.

### 3.4 Event / Action Plan

**Table 3-4 Action and Limit Levels for Construction Noise Monitoring**

Monitoring Station	Action Level	Limit Level	
		Noise Criteria, $Leq_{(30mins)}$ , dB(A)	Remark
NM1		75	
NM2b	When one documented complaint is received	70	Applicable during 0700 – 1900 hours, Monday to Saturday
		65 (during examination)	
NM3		70	
		65 (during examination)	

3.4.1 Should non-compliance of the noise criteria occur, the Event and Action Plan as presented in **Appendix 5** should be followed.

## 3.5 Mitigation Measures

3.5.1 The mitigation measures in accordance with the EP, EIA and EM&A Manual and their implementation status are presented in **Appendix 6**.

## 4 Implementation Status on Environmental Mitigation Measures

4.1.1 The Contractor has generally implemented environmental mitigation measures and requirements as stated in the EIA Report, the EP and EM&A Manual and the contract documents. The implementation status during the reporting period is summarized in **Appendix 6**.

4.1.2 The implemented environmental mitigation measures are listed as follow:

- I. The timing and sequence of construction activities were carefully arranged.
- II. QPME were used to reduce the excessive noise impact.
- III. Good site practices were implemented to reduce noise impact of the site activities. The practices are listed as below:
  - Use only well-maintained and regularly-serviced plant during the works;
  - Turn off or throttle down the plant in intermittent use to a minimum;
  - Orient the plant known to emit noise strongly in one direction to face away from the NSRs;
  - Use silencers, mufflers and enclosures for plant where possible and maintain properly throughout the works;
  - Site fixed plant as far away from NSRs as possible; and
  - Use stockpiles of excavated materials and other structures such as site buildings effectively to screen noise from the works.
- IV. Movable noise barrier/acoustic sheet barriers as noise shield were adopted as far as practicable following the Construction Noise Management Plan (CNMP).

# 5 Monitoring Results

## 5.1 Noise

5.1.1 A total of 5 sets of 30-minute construction noise measurements were carried out at the monitoring stations (NM1, NM2b and NM3) during normal weekdays of the reporting period. The monitoring results together with graphical presentations are presented in **Appendix 7**. The local impacts observed near the monitoring stations were summarized below:

- NM1: Railway noise, traffic noise and Yau Lee Site.
- NM2b: Road traffic noise and Yau Lee Site.
- NM3: Cargo Handling Area and Yau Lee Site.

5.1.2 No exceedance of Action and Limit Levels of construction noise was recorded during the reporting period. Therefore, there was no record of Notification of Environmental Quality Limits Exceedance in the **Appendix 11**.

5.1.3 Baseline corrections were made when the measured noise level is higher than both the noise limit level and the baseline level, and it is made by deducting the measured noise levels with their corresponding baseline noise level. The corrected noise level (ie. Construction Noise Level) would solely represent the noise levels of Construction works.

5.1.4 The methodology is shown as below:

- When Measured noise level (Leq 30mins) > Baseline noise level (Leq30), Construction noise level is calculated
- Construction noise level = Measured noise level (Leq 30 mins) – Baseline noise level
- If Measured noise level (Leq 30mins) < Baseline noise level, Corrected noise level = Measured noise level

## 5.2 Waste Management

5.2.1 Wastes generated from this Project include inert construction and demolition (C&D) materials and non-inert C&D materials. Non-inert C&D materials were made up of general refuse, steels and paper/cardboard packaging materials. Steel materials generated from the Project were also grouped into non-inert C&D materials as the materials were not disposed of with other inert C&D materials. With reference to relevant handling records and trip tickets of this Project, the quantities of different types of waste generated in the reporting period are summarised in **Appendix 8**. The non-inert C&D materials and general refuse generated from the Project were disposed of at the NENT Landfill. A total of **XXX tonnes (To be updated)** of general refuse was generated during the reporting period. The inert C&D materials generated from the Project were disposed of at the Chai Wan Public Fill Barging Point (CW-PFBP) or Fill Bank at Tseung Kwan O Area 137(TKO137FB). A total of **XXX tonnes (To be updated)** of inert waste was generated during the reporting period.

## 6 Environmental Site Inspection

6.1.1 Joint environmental site inspections were conducted in the reporting period on 2, 10, 16, 24, and 31 July 2025. The joint environmental site inspection was carried out by the representatives of the Engineer's Representative (ER), the Contractor, IEC and the ET on 16 July 2025. The joint environmental site inspection record is shown in **Appendix 9**. There was no noncompliance recorded during the site inspections.

6.1.2 Major findings and recommendations are summarized as follows:

### 2 July 2025

- An opened cement bag without cover was found at the access road of L1. The Contractor was advised that the opened cement bags should be covered with impervious sheet when not in use.

### 10 July 2025

- General waste was observed at the access road of L1. The Contractor is advised to increase the frequency of site cleaning and waste collection to maintain good housekeeping on site.

### 16 July 2025

- The Stockpile on site is reminded to be properly covered before the upcoming rainstorm. The Contractor is advised to cover the stockpile at access road with impervious sheets to be prepared for the upcoming rainstorm.

### 24 July 2025

- An opened cement bag was observed at the access road of L4. The Contractor is advised to cover the opened cement bag at access road with impervious sheets or to remove it properly if it is no longer in use.

### 31 July 2025

- Dusty materials were observed without an impervious sheet cover on L8. The Contractor is advised to cover the dusty materials with impervious sheets after work or to remove them properly if they are no longer in use.

# 7 Environmental Non-conformance

## 7.1 Summary of Monitoring Exceedance

7.1.1 No exceedance of the Action and Limit Levels of construction noise was recorded at monitoring station during the reporting period.

## 7.2 Summary of Environmental Non-compliance

7.2.1 No non-compliance event was recorded during the reporting period.

## 7.3 Summary of Environmental Complaint

7.3.1 No environmental complaint was received during the reporting period. The cumulative statistic on environmental complaint is presented on **Table 7-1**.

7.3.2 The cumulative statistics on environmental complaints are presented in **Table 7-1**.

**Table 7-1 Cumulative Statistics on Environmental Complaints**

Reporting Period		Environmental Aspects				
		Air Quality	Noise	Water Quality	Waste	Ecology
July 2025	Complaint Date	-	-	-	-	-
	No. of Complaint	0	0	0	0	0
Reporting Period Total		0	0	0	0	0
Accumulate of project		0	1 <sup>*</sup>	0	0	0

Remarks:

1. <sup>\*</sup> Equal to non-project related after the investigation.

7.3.3 Cumulative complaint / enquiry log, Summaries of complaints and enquiries are presented in **Appendix 12**.

## 7.4 Summary of Environmental Summons and Successful Prosecution

7.4.1 No summons and successful prosecution were received during the reporting period.

## 8 Future Key Issues

### 8.1 Key Issues for the Coming Month

8.1.1 Works to be undertaken for the coming monitoring periods are summarized below: (To be updated)

- Architectural finishing works and BS installation works
- Preparation works for Gov. inspection works (WSD, FSD, DSD)

8.1.2 Potential environmental impacts arising from the above construction activities are mainly associated with dust, construction noise, site runoff and waste management.

### 8.2 Monitoring Schedule for the Next Month

8.2.1 The tentative schedule of noise monitoring for the next reporting period is presented in **Appendix 10**.

### 8.3 Construction Programme for the Next Month

8.3.1 The most updated construction programme for the Project is presented in **Appendix 1**.

## 9 Review of EM&A Data and EIA Predictions

### 9.1 Noise

9.1.1 The EIA predicted the construction noise levels during the day-time period. In this reporting period, superstructure construction, rebar fixing, formwork erection, and concreting works were conducted. Hence, a comparison between the measured noise results in this reporting month and predicted EIA noise levels was made. (**Table 9-1**).

**Table 9-1 Comparison between the measured noise results and EIA predictions**

Monitoring Station	EIA Predicted Construction Noise Levels, dB(A)	Baseline Noise Levels, dB(A)	Noise Monitoring Results, dB(A)	
			Leq <sub>(30mins)</sub> Average	Range
NM1	62	65.1	64.2	63 – 66
NM2b	69	73.4	71.6*	70 – 73*
NM3	66	69.8	66.8*	66 – 68*

Note: \* The measured noise levels exceeded the limit noise level of 70 dB and 65dB during the examination period for NM2b & NM3, but they were lower than the baseline level for NM2b & NM3. Therefore, they were not considered as an exceedance of limit level. As such the EAP was not triggered.

9.1.2 The comparison shows that the average of 30-minute construction noise levels recorded at all monitoring stations during the reporting period were higher than the EIA predicted construction noise levels but lower than the baseline noise levels. Recommended mitigation measures in **Section 5.8** of EIA will be implemented throughout the construction period.

### 9.2 Waste Management

9.2.1 The estimated amount of waste generated in this Project and the accumulated quantities of waste generated up to this reporting month are presented in **Appendix 8**. The amount of construction waste generated are minimal. Recommended mitigation measures in **Section 8.5** of the EIA will be implemented during the construction stage.

### 9.3 Conclusion of Review

9.3.1 The EIA predictions against the monitoring results since the commencement of construction works have been reviewed. The EIA concluded that the Project would not cause adverse impacts to the environment, and the monitoring results have also indicated the same so far. Mitigation measures recommended in the EP, EIA, EM&A Manual and the contract documents will continue to be implemented throughout the construction phase of the Project.

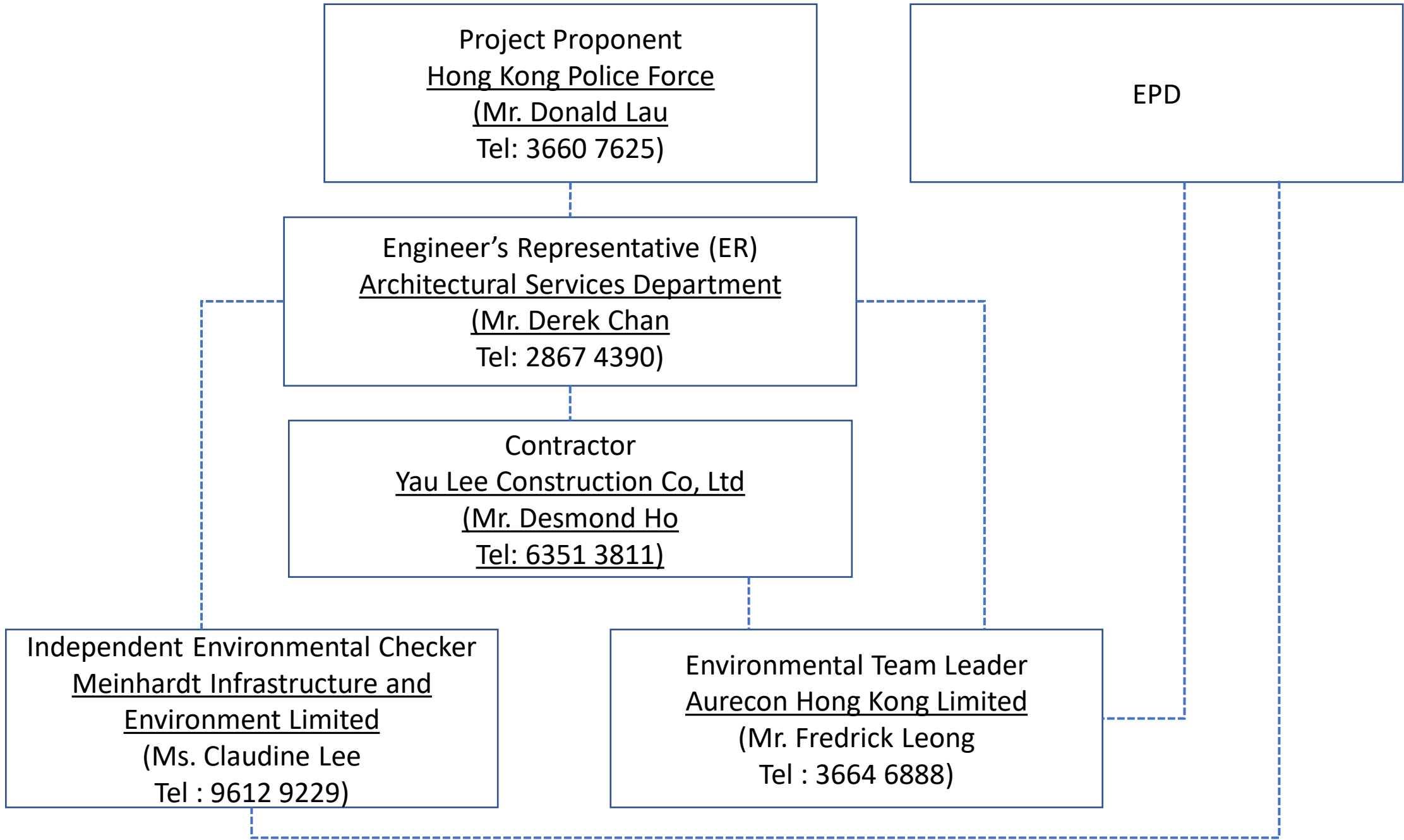
# 10 Conclusion

- 10.1.1 For construction noise, no Action and Limit Level exceedance was recorded at the monitoring stations during the reporting period.
- 10.1.2 Environmental site inspection was carried out on 2, 10, 16, 24, and 31 July 2025. Recommendations on remedial actions were given to the Contractors for the deficiencies identified during the site inspections.
- 10.1.3 EPD conducted general site inspection on XX July 2025. (To be updated) No special findings were identified during the inspection.
- 10.1.4 No complaint was recorded during the reporting period.
- 10.1.5 No notification of summons and prosecution was received during the reporting period.
- 10.1.6 The ET will keep track on the EM&A programme to ensure compliance of environmental requirements and the proper implementation of all necessary mitigation measures.

# Appendix 1

(3-Month Rolling Programme To be updated)

# Appendix 2



Key: - - - - Line of Communication

# Appendix 3

2025		July				
MONDAY	TUESDAY	WEDNESDAY	THURSDAY	FRIDAY	SATURDAY	SUNDAY
30	01	02 Noise Monitoring (NM1, NM2b and NM3)	03	04	05	06
07 Noise Monitoring (NM1, NM2b and NM3)	08	09	10	11	12	13
14 Noise Monitoring (NM1, NM2b and NM3)	15	16	17	18	19	20
21	22 Noise Monitoring (NM1, NM2b and NM3)	23	24	25	26	27
28 Noise Monitoring (NM1, NM2b and NM3)	29	30	31	01	02	03
04	05	Notes:				

# Appendix 4

(Cal Certs To be updated)

# Appendix 5

## Event and Action Plan for Construction Noise Monitoring

	Action			
	ET	IEC	ER	Contractor
Action Level	<ol style="list-style-type: none"> <li>1. Notify the ER, IEC and Contractor.</li> <li>2. Carry out investigation.</li> <li>3. Report the results of investigation to the ER, IEC and Contractor.</li> <li>4. Discuss with the IEC and Contractor and formulate remedial measures.</li> <li>5. Increase monitoring frequency to check mitigation effectiveness.</li> </ol>	<ol style="list-style-type: none"> <li>1. Review the investigation results submitted by the ET.</li> <li>2. Review the proposed remedial measures by the Contractor and advise the ER accordingly.</li> <li>3. Advise the ER on the effectiveness of the proposed remedial measures.</li> </ol>	<ol style="list-style-type: none"> <li>1. Confirm receipt of notification of failure in writing.</li> <li>2. Notify the Contractor.</li> <li>3. Require the Contractor to propose remedial measures.</li> <li>4. Ensure remedial measures are properly implemented.</li> </ol>	<ol style="list-style-type: none"> <li>1. Submit noise mitigation proposals to the IEC and ER.</li> <li>2. Implement noise mitigation proposals.</li> </ol>
Limit Level	<ol style="list-style-type: none"> <li>1. Notify the ER, IEC, Contractor and EPD.</li> <li>2. Identify sources.</li> <li>3. Repeat measurements to confirm findings.</li> <li>4. Increase monitoring frequency.</li> <li>5. Carry out analysis of Contractor's working procedures to determine possible mitigation to be implemented.</li> <li>6. Inform the IEC, ER and Contractor the causes and action taken for the exceedances.</li> <li>7. Assess the effectiveness of the Contractor's remedial action and keep the IEC, EPD and ER informed of the results.</li> <li>8. If exceedance stops, cease additional monitoring.</li> </ol>	<ol style="list-style-type: none"> <li>1. Discuss amongst the ER, ET and Contractor on the potential remedial action.</li> <li>2. Review the Contractor's remedial action whenever necessary to assure their effectiveness and advise the ER accordingly.</li> </ol>	<ol style="list-style-type: none"> <li>1. Confirm receipt of notification of failure in writing.</li> <li>2. Notify the Contractor.</li> <li>3. Require the Contractor to propose remedial measures.</li> <li>4. Ensure remedial measures are properly implemented.</li> <li>5. If exceedance continues, consider what portion of work is responsible and instruct the Contractor to stop that portion of works until the exceedance is abated.</li> </ol>	<ol style="list-style-type: none"> <li>1. Take immediate action to avoid further exceedance.</li> <li>2. Submit proposals for remedial action to the IEC and ER within 3 working days of notification.</li> <li>3. Implement the agreed proposals.</li> <li>4. Submit further proposals if problems still not under control.</li> <li>5. Stop the relevant portion of works as determined by the ER until the exceedance is abated.</li> </ol>

### Notes

(1) ET – Environmental Team, IEC – Independent Environmental Checker;

(2) Each step of action should be undertaken within 1 working day unless otherwise specified

# Appendix 6

**Implementation Schedule for Environmental Mitigation Measures (EMIS)**

EIA Ref.	EM&A Manual Ref.	Environmental Protection Measures	Location/ Duration of Measures/ Timing of Completion of Measures	Implementation Agent	Status
<b>Air Quality</b>					
4.8.2	2.3.1	<p>Dust suppression measures stipulated in the Air Pollution Control (Construction Dust) Regulation and good site practices:</p> <ul style="list-style-type: none"> <li>• Use of regular watering, to reduce dust emissions from exposed site surfaces and unpaved roads, particularly during dry weather;</li> <li>• Use of frequent watering for particularly dusty construction areas close to ASRs;</li> <li>• Side enclosure and covering of any aggregate or dusty material storage piles to reduce emissions. Where this is not practicable owing to frequent usage, watering should be applied to aggregate fines;</li> <li>• Open temporary stockpiles should be avoided or covered. Prevent placing dusty material storage plies near ASRs;</li> <li>• Tarpaulin covering of all dusty vehicle loads transported to, from and between site locations;</li> <li>• Establishment and use of vehicle wheel and body washing facilities at the exit points of the site;</li> <li>• Imposition of speed controls for vehicles on unpaved site roads. 8 km/hr is the recommended limit;</li> <li>• Routing of vehicles and positioning of construction plant should be at the maximum possible distance from ASRs;</li> <li>• Every stock of more than 20 bags of cement or dry pulverised fuel ash (PFA) , if applicable, should be covered entirely by impervious sheeting or placed in an area sheltered on the top and the 3-sides; and</li> <li>• Loading, unloading, transfer, handling or storage of large amount of cement or dry PFA should be carried out in a totally enclosed system or facility, and nay vent or exhaust should be fitted with the an effective fabric filter or</li> </ul>	All work sites	Contractor and sub-contractor(s)	√

EIA Ref.	EM&A Manual Ref.	Environmental Protection Measures	Location/ Duration of Measures/ Timing of Completion of Measures	Implementation Agent	Status
		equivalent air pollution control system.			
<b>Noise</b>					
5.8.3	3.4.1 – 3.4.2	<p>Selection and Optimisation of Construction Processes</p> <ul style="list-style-type: none"> <li>• Carefully arrange the timing and sequencing of the various construction activities according to the actual site work situation;</li> <li>• Limit the quantity of PME to be operated concurrently;</li> <li>• In the case during school examination, more stringent construction noise criteria should be imposed, the potentially most disruptive construction activities should be avoided, and arranged to be conducted during school holidays as far as practicable; and</li> <li>• Preparation of the Construction Noise Management Plan.</li> </ul>	All work sites	Contractor and sub-contractor(s)	√
5.8.4 – 5.8.6	3.4.1 – 3.4.2	<p>Use of QPME and Quiet Working Methods</p> <p>In order to reduce the excessive noise impacts at the NSRs, quieter PME are recommended. Whilst quieter PME are listed, the Contractor may be able to obtain particular models of plant that are quieter than the PMEs given in GW-TM. The associated mitigation measures to the particular PME should be reviewed by the Contractor.</p> <p>The use of plants with SWLs less than those in the GW-TM are summarized in <b>Table 5.14</b> of the EIA report and the proposed mitigated plant inventory for the</p>	All work sites	Contractor and sub-contractor(s)	√

EIA Ref.	EM&A Manual Ref.	Environmental Protection Measures	Location/ Duration of Measures/ Timing of Completion of Measures	Implementation Agent	Status
		construction works of the proposed Project is detailed in <i>Appendix 5.8</i> .			
5.8.7 – 5.8.8	3.4.1 – 3.4.2	<p>Use of movable noise barriers</p> <p>The use of movable noise barrier for certain PME could further minimize the construction noise impact. In general 5dB(A) reduction for mobile PME and 10dB(A) for stationary PME can be achieved provided that the direct line-of site of the PME is blocked. The Contractor shall be responsible for the design of the movable noise barrier with due consideration given to the size of the PME and the requirement of intercepting the line of sight between the NSRs and the PME, as well as ensuring that the barriers should have no openings and gaps.</p>	All work sites	Contractor and sub-contractor(s)	√
5.8.9	3.4.1 – 3.4.2	<p>Good site practices</p> <ul style="list-style-type: none"> <li>• Use of well-maintained and regularly-serviced plant during the works;</li> <li>• Plant operating on intermittent basis should be turned off or throttled down to a minimum;</li> <li>• Plant known to emit noise strongly in one direction should be orientated to face away from the NSRs;</li> <li>• Silencers, mufflers and enclosures for plant should be used where possible and properly maintained throughout the works;</li> <li>• Where possible fixed plants should be sited away from NSRs; and</li> <li>• Stockpiles of excavated materials and other structures such as site buildings should be used effectively to screen noise from the works.</li> </ul>	All work sites	Contractor and sub-contractor(s)	√

EIA Ref.	EM&A Manual Ref.	Environmental Protection Measures	Location/ Duration of Measures/ Timing of Completion of Measures	Implementation Agent	Status
<b>Water Quality &amp; Sewerage</b>					
6.9.1	4.4.2	<p>In accordance with Professional Persons Environmental Consultative Committee Practice Notes (ProPECC PN) 1/94, potential water quality impact shall be minimised by the implementation of construction phase mitigation measures and general good site practice including the following:</p> <ul style="list-style-type: none"> <li>• At the establishment of works site, perimeter cut-off drains to direct off-site water around the Site should be constructed with internal drainage works and erosion and sedimentation control facilities implemented. Channels (both temporary and permanent drainage pipes and culverts), earth bunds or sand bag barriers should be provided to divert the stormwater to silt removal facilities.</li> <li>• Dikes or embankments for flood protection should be implemented around the boundaries of earthwork areas. Temporary ditches should be provided to facilitate the run-off discharge into an appropriate watercourse, through a silt/sediment trap. Silt/sediment traps should also be incorporated in the permanent drainage channels to enhance deposition rates;</li> <li>• The design of efficient silt removal facilities should be based on the guidelines in Appendix A1 of ProPECC PN 1/94, which states that the retention time for silt/sand traps should be 5 minutes under maximum flow conditions. The sizes may vary depending upon the flow rate, but for a flow rate of 0.1m<sup>3</sup>/s, a sedimentation basin of 30m<sup>3</sup> would be required and for a</li> </ul>	All work sites	Contractor and sub-contractor(s)	√

EIA Ref.	EM&A Manual Ref.	Environmental Protection Measures	Location/ Duration of Measures/ Timing of Completion of Measures	Implementation Agent	Status
		<p>flow rate of 0.5m<sup>3</sup>/s the basin would be 150m<sup>3</sup>. The detailed design of the sand/silt raps should be undertaken by the Contractor prior to the commencement of construction.</p> <ul style="list-style-type: none"> <li>• The construction works should be programmed to minimise surface excavation works during rainy seasons (April to September), as possible. All exposed earth areas should be completed and vegetated as soon as possible after completion of the earthwork, or alternatively, within 14 days of the cessation of earthworks where practicable. If excavation of soil cannot be avoided during the rainy season, or at any time of year when rainstorms are likely, exposed slope surfaces should be covered by tarpaulin or other means;</li> <li>• The overall slope of works sites should be kept to a minimum to reduce the erosive potential of surface water flows, and all trafficked areas and access roads should be protected by coarse stone ballast. An additional advantage accruing from the use of crushed stone is the positive traction gained during the prolonged periods of inclement weather and the reduction of surface sheet flows;</li> <li>• All drainage facilities and erosion and sediment control structures should be regularly inspected and maintained to ensure their proper and efficient operation at all times particularly following rainstorms. Deposited silts and grits should be removed regularly and disposed of by spreading evenly over stable, vegetated areas;</li> <li>• Measures should be taken to minimise the ingress of site drainage into excavations. If the excavation of trenches in wet season is inevitable, they should be dug and backfilled in short sections wherever practicable. The water pumped out from trenches or foundation excavations should be discharged into storm drains via silt removal facilities;</li> <li>• All open stockpiles of construction materials (for example, aggregates, sand and fill materials) should be covered with tarpaulin or similar fabric during rainstorms. Measures should be taken to prevent the washing away of construction materials, soil, silt or debris into any drainage system;</li> <li>• Manholes (including newly constructed ones) should always be adequately covered and temporarily sealed so as to prevent silt, construction materials</li> </ul>			√

EIA Ref.	EM&A Manual Ref.	Environmental Protection Measures	Location/ Duration of Measures/ Timing of Completion of Measures	Implementation Agent	Status
		<p>or debris being washed into the drainage system and storm run-off being directed into foul sewers;</p> <ul style="list-style-type: none"> <li>• Precautions to be taken at any time of the year when rainstorms are likely, actions to be taken when a rainstorm is imminent or forecasted and during or after rainstorms, are summarised in Appendix A2 of ProPECC PN 1/94. Particular attention should be paid to the control of silty surface run-off during storm events;</li> <li>• All vehicles and plants should be cleaned before leaving the Project site to ensure no earth, mud, debris and the like is deposited by them on roads. An adequately designed and sited wheel washing bay should be provided at the exit of Project site where practicable. Wash-water should have sand and silt settled out and removed at least on a weekly basis to ensure the continued efficiency of the process. The section of access road leading to, and exiting from, the wheel-washing bay to public roads should be paved with sufficient backfall toward the wheel-washing bay to prevent vehicle tracking of soil and silty water to public roads and drains;</li> <li>• Oil interceptors should be provided in the drainage system downstream of any oil/fuel pollution sources. Oil interceptors should be emptied and cleaned regularly to prevent the release of oil and grease into the storm water drainage system after accidental spillage. A bypass should be provided for oil interceptors to prevent flushing during heavy rain. Any drainage channels connecting storm drains via designed sand/silt removal facilities should be disconnected/removed after completion of construction stage to prevent any direct discharge to the stormwater system;</li> <li>• The construction solid waste, debris and rubbish on-site should be collected, handled and disposed of properly to avoid causing any water quality impacts. The requirements for solid waste management are detailed in Section 8 of EIA report; and</li> <li>• All fuel tanks and storage areas should be provided with locks and sited on sealed areas, within bunds of a capacity equal to 110% of the storage capacity of the largest tank to prevent spilled fuel oils from reaching the nearby WSRs.</li> </ul>			√

EIA Ref.	EM&A Manual Ref.	Environmental Protection Measures	Location/ Duration of Measures/ Timing of Completion of Measures	Implementation Agent	Status
6.9.3	4.4.3	There is a need to apply to the EPD for a discharge licence for discharge of effluent from the construction site under the WPCO. The discharge quality must meet the requirements as specified in the discharge licence. All the run-off and wastewater generated from the works areas should be treated so that it satisfies all the standards listed in the Technical Memorandum. Minimum distances of 100 m should be maintained between the discharge points of construction site effluent and the existing seawater intakes. In addition, no new effluent discharges in nearby typhoon shelters should be allowed. The beneficial uses of the treated effluent for other on-site activities such as dust suppression, wheel washing and general cleaning etc., would minimise water consumption and reduce the effluent discharge volume.	All work sites	Contractor and sub-contractor(s)	√
6.9.4	4.4.4	Portable chemical toilets and sewage holding tanks are recommended for the handling of the construction sewage generated by the workforce. A licenced contractor should be employed to provide appropriate and adequate portable toilets and be responsible for appropriate disposal and maintenance.	All work sites	Contractor and sub-contractor(s)	√
6.9.6	4.4.5	Any maintenance facilities should be located on hard standings within a bunded area, and sumps and oil interceptors should be provided. Maintenance of vehicles and equipment involving activities with potential for leakage and spillage should be undertaken within the areas appropriately equipped to control these discharges.	All work sites	Contractor and sub-contractor(s)	√
6.9.7	4.4.6	All sewage arising from the proposed Project should be collected and diverted to the public foul water drainage system via proper connections to minimise water quality impact from the operation of the Project and ensure compliance with Technical Memorandum on Standards for Effluents Discharged into Drainage and Sewerage Systems, Inland and Coastal Waters under the Water Pollution Control Ordinance (WPCO-TM).	The Government Complex and Vehicle Depot	Contractor and sub-contractor(s), HKPF, FEHD, EMSD and GL	√
6.9.8	4.4.7	Run-offs from the covered areas including vehicle washing bays and vehicle examination / maintenance / repair / testing area would be properly treated prior to discharge into the foul water drainage system. The wastewater treatment	The Government Complex and Vehicle Depot	Contractor and sub-contractor(s)	√

EIA Ref.	EM&A Manual Ref.	Environmental Protection Measures	Location/ Duration of Measures/ Timing of Completion of Measures	Implementation Agent	Status
		facilities for the proposed Project, which comprised of petrol interceptor and sedimentation tank, would be designed using sedimentation process with adequate treatment capacity. Oily waste collected by petrol interceptors is considered and disposed of as chemical waste. The wastewater treatment facilities for the proposed Project will be designed during the detailed design stage and the treated effluent for discharging into the public foul water drainage system should comply with the effluent standards as stated in the WPCO-TM.			
<b>Landscape and Visual</b>					
7.8.2	5.2.1	Hoardings should be provided with aesthetic treatment and designed to be subtle and camouflaged. It should be compatible with the surrounding landscape and visually “impermeable” to block the view of construction activities from VSRs.	All work sites	Contractor and sub-contractor(s)	√
7.8.3	5.2.1	Temporary landscape treatment, such as the provision of temporary landscape planting around the Site office in ornamental pots and application of green roof for Site office, should be considered during construction phase. Landscape planting in movable planters should also be considered as a temporary greening measure for the Project area (i.e. along Site hoarding). Design of the green roof and the type of species to be used shall be reviewed and confirmed during detailed design stage.	All work sites	Contractor and sub-contractor(s)	N/A

EIA Ref.	EM&A Manual Ref.	Environmental Protection Measures	Location/ Duration of Measures/ Timing of Completion of Measures	Implementation Agent	Status
7.8.4	5.2.1	Disturbance to existing vegetation should be avoided as far as practicable. Where possible, the construction programme should retain all trees in situ that are not in direct conflict with the development proposals. Subject to the detailed design of the proposed Project, a review shall be carried out before commencement of construction phase to assess the potential conflict of the construction activities with existing roadside trees and the need of corresponding measures. Proper protective fencing should be provided by the Contractor to protect the preserved trees before commencement of any works within the Project site. The protective fencing should be erected along or beyond the perimeter of the tree protection zone of each individual tree.	All work sites	Contractor and sub-contractor(s)	√

EIA Ref.	EM&A Manual Ref.	Environmental Protection Measures	Location/ Duration of Measures/ Timing of Completion of Measures	Implementation Agent	Status
7.8.7	5.2.1	<p>A multi-patch of landscape area should be provided on the roof of the proposed building to soften the impact of the built structure. An area of approximately 2600m<sup>2</sup> of shrub, which comprises of a mix of native and ornamental species, is proposed to be provided to enhance the aesthetics of views for those viewing the roof. The type of shrub species will be confirmed during detailed design stage. The planting should be commenced during construction stage and be completed before the completion of construction stage to ensure the measure will be implemented on Day 1 of operation stage. Vegetation maintenance should be provided by the Operator.</p>	The Government Complex and Vehicle Depot	Contractor and sub-contractor(s), Operator	N/A
7.8.8 7.8.9	5.2.1	<p>The exterior of the permanent structure of the proposed Project should use non-reflective external finishes in light colour that is visually unobtrusive with surrounding context. Non-reflective paving materials should be considered to reduce potential glare from surface reflectance. The finishing material and colour will be reviewed and confirmed during detailed design stage.</p> <p>Lighting should be efficiently designed so that minimum amount of lighting is required for safety and security. The design may make reference to the Guidelines on Industry Best Practices for External Lighting Installations by Environmental Bureau, EPD and EMSD. The mounting height and direction of exterior lighting fixtures shall be designed and arranged to point away from sensitive receivers where possible. Specification of lighting operation schedule shall be formed by the operator to impose restriction on lighting operation after business hours, such as limiting the operation of lighting except for security lighting only, and in areas with necessary night-time operation where applicable.</p>	The Government Complex and Vehicle Depot	Contractor and sub-contractor(s), Operator	N/A

EIA Ref.	EM&A Manual Ref.	Environmental Protection Measures	Location/ Duration of Measures/ Timing of Completion of Measures	Implementation Agent	Status
<b>Waste Management</b>					
8.5.1	6.2.1	<p>Recommendations for good site practices:</p> <ul style="list-style-type: none"> <li>• The Contractor shall prepare a Waste Management Plan (WMP) in accordance with the requirements set out in the ETWB TCW No. 19/2005, Waste Management on Construction Site, for the Engineer's Representative approval. The WMP shall include monthly and yearly Waste Flow Tables that indicate the amounts of waste generated, recycled and disposed of (including final disposal site);</li> <li>• The Contractor's waste management practices and effectiveness shall be audited by the Engineer's Representative on regular basis;</li> <li>• The Contractor shall provide training for site staff for the concept of site cleanliness and appropriate waste management procedures, including waste reduction, reuse and recycling;</li> <li>• The Contractor shall ensure sufficient waste disposal points and regular collection of waste;</li> <li>• The Contractor shall use trucks with covering for the open-box bed and enclosed container shall be used to minimise windblown litter and dust during transportation of waste;</li> <li>• The Contractor shall implement regular cleaning and maintenance programme for drainage systems, pumps and oil interceptors;</li> <li>• Separation of chemical wastes for special handling and appropriate treatment at a Chemical Waste Treatment Facility (CWTF);</li> <li>• Encourage collection of aluminium cans, paper and plastic bottles by providing separate labelled bins to enable these wastes to be segregated from other general refuse generated by the workforce;</li> <li>• Segregation and storage of different types of waste in different containers, skips or stockpiles to enhance reuse or recycling of materials and their proper disposal;</li> <li>• Wheel washing facilities shall be used by all trucks leaving the site to prevent transfer of mud onto public roads;</li> </ul>	All works sites	Contractor and Sub-contractors	√

EIA Ref.	EM&A Manual Ref.	Environmental Protection Measures	Location/ Duration of Measures/ Timing of Completion of Measures	Implementation Agent	Status
		<ul style="list-style-type: none"> <li>• Make provisions in contract documents to allow and promote the use of recycled aggregates where appropriate;</li> <li>• No waste shall be burnt on-site;</li> <li>• A recording system for the amount of wastes generated, recycled and disposed (including disposal sites) should be proposed;</li> <li>• Plan and stock construction materials carefully to minimise amount of waste generated and avoid unnecessary generation of waste; and</li> <li>• Adequate numbers of portable toilets should be provided for on-site workers. Portable toilets should be maintained in reasonable states, which will not deter the workers from utilizing them. Night soil should be regularly collected by licensed collectors.</li> </ul>			√
8.5.1	6.2.1	<p><u>C&amp;D Materials / Waste:</u></p> <ul style="list-style-type: none"> <li>• Use standard formwork or pre-fabrication as far as practicable so as to minimise the C&amp;D Materials arising;</li> <li>• Consider the use of more durable formwork or plastic facing for construction works;</li> <li>• Avoid the use of wooden hoardings and substitute with metal hoarding to facilitate recycling;</li> <li>• Purchase of construction materials should be carefully planned in order to avoid over-ordering and wastage;</li> <li>• Establish a trip-ticket system in accordance with DevB TC(W) No. 6/2010 and Waste Disposal (Charges for Disposal of Construction Waste) Regulation in order to monitor the disposal of inert C&amp;D Materials at public fill and the remaining C&amp;D Waste to landfills, and control fly-tipping;</li> <li>• Design foundation works to minimise the amount of excavated material to be generated;</li> <li>• Sort construction debris and excavated materials on-site to recover</li> </ul>	All work sites	Contractor and Sub-contractors	√

EIA Ref.	EM&A Manual Ref.	Environmental Protection Measures	Location/ Duration of Measures/ Timing of Completion of Measures	Implementation Agent	Status
		<p>reusable/recyclable portions (i.e. soil, broken concrete, metal, etc.) for backfilling and reinstatement;</p> <ul style="list-style-type: none"> <li>• Segregate and store different types of waste in different containers, skips or stockpiles to enhance reuse or recycling of materials and their proper disposal;</li> <li>• Specify in design &amp; build contract the use of recycled aggregates where appropriate;</li> <li>• Plan and stock construction materials carefully to minimise the amount of waste to be generated and to avoid unnecessary generation of waste; and</li> <li>• Recommend the use of metal fencing or building panels, which are more durable than wooden panels, for the erection of construction site hoarding.</li> </ul>			√
8.5.1	6.2.1	<p><u>Chemical waste:</u></p> <ul style="list-style-type: none"> <li>• Chemical waste producers should be registered with the EPD;</li> <li>• Chemical waste should be handled in accordance with the “Code of Practice on the Packaging, Handling and Storage of Chemical Wastes” including but not limited to the followings: <ul style="list-style-type: none"> <li>– Good quality containers compatible with the chemical wastes should be used and maintained in good conditions and securely closed, with incompatible chemicals be stored separately.</li> <li>– Appropriate labels should be securely attached on each chemical waste container in English and Chinese according to the instructions prescribed in Schedule 2 of the Regulations.</li> <li>– A licensed collector to transport and dispose of the chemical wastes should be employed by the Contractor, to either the Chemical Waste Treatment Centre at Tsing Yi, or any other licensed facilities.</li> </ul> </li> <li>• Waste oils, chemicals or solvents should not be discharged to drain; and</li> <li>• Routine cleaning and maintenance programme for drainage systems, sumps</li> </ul>	The Government Complex and Vehicle Depot	Contractor and Sub-contractor; HKPF, FEHD, EMSD and GL	√

EIA Ref.	EM&A Manual Ref.	Environmental Protection Measures	Location/ Duration of Measures/ Timing of Completion of Measures	Implementation Agent	Status
		and oil interceptors during operation.			
8.5.1	6.2.1	<p><u>General refuse:</u></p> <ul style="list-style-type: none"> <li>• Sufficient dustbins should be provided for storage of waste as required under the Public Cleansing and Prevention of Nuisances By-laws;</li> <li>• Sufficient enclosed bins should be provided for general refuse, food and beverage waste to reduce odour, pest and litter impacts;</li> <li>• General refuse arising on-site should be stored in enclosed bins or compaction units separately from C&amp;D and chemical wastes;</li> <li>• A reliable waste collector should be employed to clear general refuse from the construction site on a daily basis and disposed of to the licensed landfill or refuse transfer station;</li> <li>• Office wastes can be reduced by recycling of paper if such volume is sufficiently large to warrant collection. Participation in a local collection scheme by the Contractor should be advocated; and</li> <li>• Waste separation facilities for paper, aluminium cans, plastic bottles, etc. should be provided on-site and collected by individual collectors should be encouraged.</li> </ul>	The Government Complex and Vehicle Depot	Contractor and Sub-contractor; HKPF, FEHD, EMSD and GL	√
<b>Hazard to Life</b>					
10.11.1	8.2.1	<p>Recommendations for good site practices in construction phase:</p> <ul style="list-style-type: none"> <li>• ignition of fire on site should be controlled throughout the construction programme;</li> <li>• any temporary storage of fuel and flammable chemical should be minimised to reduce chance of causing explosion or escalation of fire in the case of emergency event at nearby potentially hazardous sources;</li> </ul>	All works area	Contractor and sub-contractors	√

EIA Ref.	EM&A Manual Ref.	Environmental Protection Measures	Location/ Duration of Measures/ Timing of Completion of Measures	Implementation Agent	Status
		<ul style="list-style-type: none"> <li>• fire extinguisher or other firefighting equipment should be made easily accessible to on-site workers; and</li> <li>• establish communication channel and evacuation plan in the case of emergency event at nearby potentially hazardous sources.</li> </ul>			

Remark:

√ Compliance of Mitigation Measures

<> Compliance of Mitigation but need improvement

x Non-compliance of Mitigation Measures

▲ Non-compliance of Mitigation Measures but rectified by Yau Lee Construction, Co, Ltd

△ Deficiency of Mitigation Measures but rectified by Yau Lee Construction, Co, Ltd

N/A Not Applicable in Reporting Period

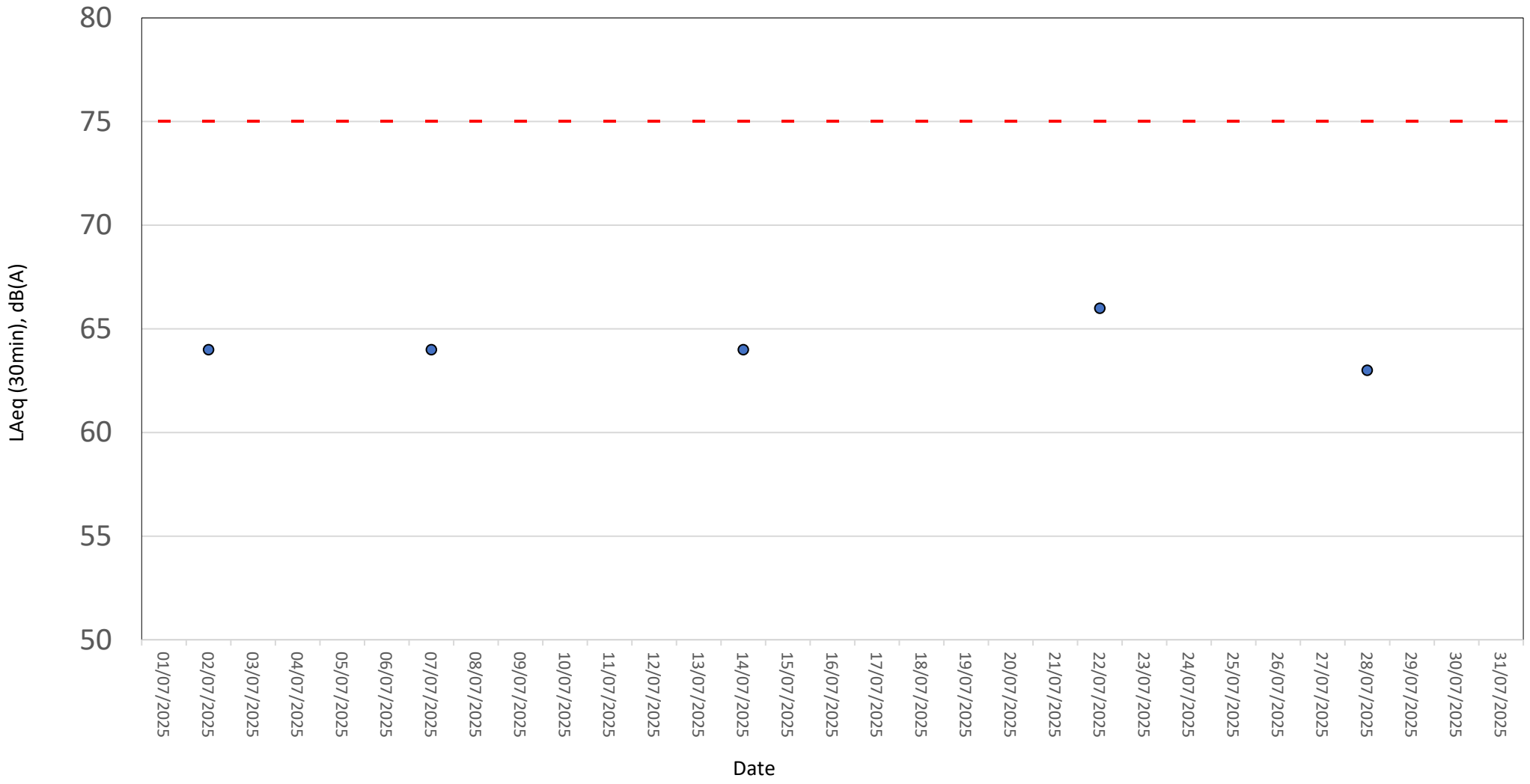
# Appendix 7

Date(yyyy-mm-dd)	Station	Start Time	Wind Speed, m/s	1st set 5mins, dB(A)		2nd set 5mins, dB(A)		3rd set 5mins, dB(A)		4th set 5mins, dB(A)		5th set 5mins, dB(A)		6th set 5mins, dB(A)		Measured Noise Level [Construction Noise Level], Leq 30mins, dB(A)		Unit	Site Observation	Construction Noise Level #	Unit
				Leq:	L10:	L90:	Leq:	L10:	L90:	Leq:	L10:	L90:	Leq:	L10:	L90:	Leq:	L10:				
2025-07-02	NM1*	14:51	0.7	Leq:	63.4	Leq:	64.5	Leq:	64.2	Leq:	63.4	Leq:	63.2	Leq:	64.4	Leq:	64	dB(A)	Major: Noise from Yau Lee Site Other: Railway Noise and Traffic Noise.	N.A.	dB(A)
				L10:	66.0	L10:	66.8	L10:	67.4	L10:	66.3	L10:	66.8								
				L90:	59.2	L90:	61.6	L90:	60.0	L90:	59.3	L90:	58.9								
2025-07-02	NM2b*	14:15	0.4	Leq:	75.9	Leq:	73.3	Leq:	71.4	Leq:	71.3	Leq:	72.3	Leq:	71.7	Leq:	73	dB(A)	Major: Noise from Yau Lee Site Other: Traffic Noise.	N.A.	dB(A)
				L10:	77.0	L10:	76.0	L10:	75.0	L10:	74.9	L10:	75.5								
				L90:	74.0	L90:	66.7	L90:	65.2	L90:	64.7	L90:	67.0								
2025-07-02	NM3	13:28	0.5	Leq:	67.2	Leq:	67.5	Leq:	67.3	Leq:	66.9	Leq:	66.4	Leq:	66.7	Leq:	67	dB(A)	Major: Noise from Yau Lee Site Other: Noise from Cargo Handling Area.	N.A.	dB(A)
				L10:	68.6	L10:	70.3	L10:	68.4	L10:	68.0	L10:	68.8								
				L90:	65.7	L90:	66.0	L90:	65.9	L90:	65.3	L90:	65.7								
2025-07-07	NM1*	14:40	0.3	Leq:	63.5	Leq:	63.9	Leq:	63.4	Leq:	65.4	Leq:	64.0	Leq:	63.7	Leq:	64	dB(A)	Major: Noise from Yau Lee Site Other: Railway Noise and Traffic Noise.	N.A.	dB(A)
				L10:	66.7	L10:	67.2	L10:	66.1	L10:	68.5	L10:	66.8								
				L90:	59.3	L90:	59.3	L90:	59.3	L90:	60.6	L90:	59.8								
2025-07-07	NM2b*	14:05	0.3	Leq:	69.7	Leq:	74.0	Leq:	70.9	Leq:	71.8	Leq:	71.6	Leq:	71.1	Leq:	72	dB(A)	Major: Noise from Yau Lee Site Other: Traffic Noise.	N.A.	dB(A)
				L10:	74.0	L10:	74.6	L10:	73.5	L10:	75.8	L10:	74.7								
				L90:	63.7	L90:	65.5	L90:	63.7	L90:	63.9	L90:	63.7								
2025-07-07	NM3	13:19	0.4	Leq:	67.4	Leq:	65.5	Leq:	65.7	Leq:	67.9	Leq:	65.8	Leq:	66.1	Leq:	66	dB(A)	Major: Noise from Yau Lee Site Other: Noise from Cargo Handling Area.	N.A.	dB(A)
				L10:	69.1	L10:	66.9	L10:	67.1	L10:	69.5	L10:	67.0								
				L90:	65.5	L90:	63.8	L90:	64.1	L90:	65.1	L90:	64.3								
2025-07-14	NM1*	14:44	0.7	Leq:	63.8	Leq:	64.3	Leq:	63.9	Leq:	64.9	Leq:	64.9	Leq:	62.9	Leq:	64	dB(A)	Major: Noise from Yau Lee Site Other: Railway Noise and Traffic Noise.	N.A.	dB(A)
				L10:	65.1	L10:	67.6	L10:	67.4	L10:	67.9	L10:	68.3								
				L90:	59.6	L90:	59.2	L90:	58.6	L90:	60.1	L90:	59.8								
2025-07-14	NM2b*	14:07	0.4	Leq:	71.8	Leq:	72.3	Leq:	74.2	Leq:	71.4	Leq:	72.0	Leq:	72.9	Leq:	73	dB(A)	Major: Noise from Yau Lee Site Other: Traffic Noise.	N.A.	dB(A)
				L10:	74.5	L10:	76.1	L10:	75.9	L10:	75.3	L10:	76.3								
				L90:	66.0	L90:	65.3	L90:	64.3	L90:	64.2	L90:	66.2								
2025-07-14	NM3	13:16	0.5	Leq:	68.8	Leq:	68.9	Leq:	67.8	Leq:	67.2	Leq:	67.4	Leq:	67.3	Leq:	68	dB(A)	Major: Noise from Yau Lee Site Other: Noise from Cargo Handling Area.	N.A.	dB(A)
				L10:	69.7	L10:	70.0	L10:	68.8	L10:	68.3	L10:	68.5								
				L90:	67.7	L90:	67.5	L90:	66.3	L90:	66.0	L90:	66.1								
2025-07-22	NM1*	14:41	0.7	Leq:	66.5	Leq:	65.7	Leq:	65.8	Leq:	65.6	Leq:	64.9	Leq:	65.9	Leq:	66	dB(A)	Major: Noise from Yau Lee Site Other: Railway Noise and Traffic Noise.	57.24	dB(A)
				L10:	69.6	L10:	68.4	L10:	69.3	L10:	69.0	L10:	68.5								
				L90:	59.5	L90:	60.5	L90:	60.1	L90:	59.6	L90:	58.7								
2025-07-22	NM2b*	14:05	0.4	Leq:	68.3	Leq:	69.4	Leq:	69.5	Leq:	70.2	Leq:	71.0	Leq:	70.9	Leq:	70	dB(A)	Major: Noise from Yau Lee Site Other: Traffic Noise.	N.A.	dB(A)
				L10:	72.1	L10:	73.2	L10:	73.5	L10:	73.7	L10:	74.8								
				L90:	61.8	L90:	61.5	L90:	62.3	L90:	63.6	L90:	63.6								
2025-07-22	NM3	13:21	0.5	Leq:	66.8	Leq:	66.4	Leq:	66.5	Leq:	68.6	Leq:	67.2	Leq:	66.7	Leq:	67	dB(A)	Major: Noise from Yau Lee Site Other: Noise from Cargo Handling Area.	N.A.	dB(A)
				L10:	68.9	L10:	68.2	L10:	68.4	L10:	72.4	L10:	67.8								
				L90:	64.9	L90:	64.6	L90:	64.6	L90:	65.5	L90:	65.6								
2025-07-28	NM1*	14:33	0.4	Leq:	63.4	Leq:	63.3	Leq:	63.4	Leq:	63.9	Leq:	63.1	Leq:	63.4	Leq:	63	dB(A)	Major: Noise from Yau Lee Site Other: Railway Noise and Traffic Noise.	N.A.	dB(A)
				L10:	65.9	L10:	66.0	L10:	66.4	L10:	67.5	L10:	66.2								
				L90:	59.4	L90:	58.7	L90:	59.1	L90:	58.8	L90:	58.7								
2025-07-28	NM2b*	13:50	0.3	Leq:	69.2	Leq:	69.5	Leq:	69.5	Leq:	69.4	Leq:	70.6	Leq:	69.0	Leq:	70	dB(A)	Major: Noise from Yau Lee Site Other: Traffic Noise.	N.A.	dB(A)
				L10:	72.8	L10:	73.1	L10:	72.9	L10:	73.0	L10:	73.8								
				L90:	63.9	L90:	63.9	L90:	64.0	L90:	64.4	L90:	64.5								
2025-07-28	NM3	13:13	0.4	Leq:	66.4	Leq:	66.0	Leq:	66.2	Leq:	67.2	Leq:	66.6	Leq:	66.4	Leq:	66	dB(A)	Major: Noise from Yau Lee Site Other: Noise from Cargo Handling Area.	N.A.	dB(A)
				L10:	67.4	L10:	67.2	L10:	67.2	L10:	68.1	L10:	67.9								
				L90:	65.3	L90:	64.8	L90:	65.2	L90:	66.2	L90:	65.4								

Remark: \* A facade correction of +3 dB(A) was applied to the measured noise level.  
# The measured noise level was higher than the baseline level at NM1.  
Therefore, baseline corrections were carried out and the corrected noise level which solely represent the noise level of Construction works are lower than the noise criteria. As such the EAP was not triggered.

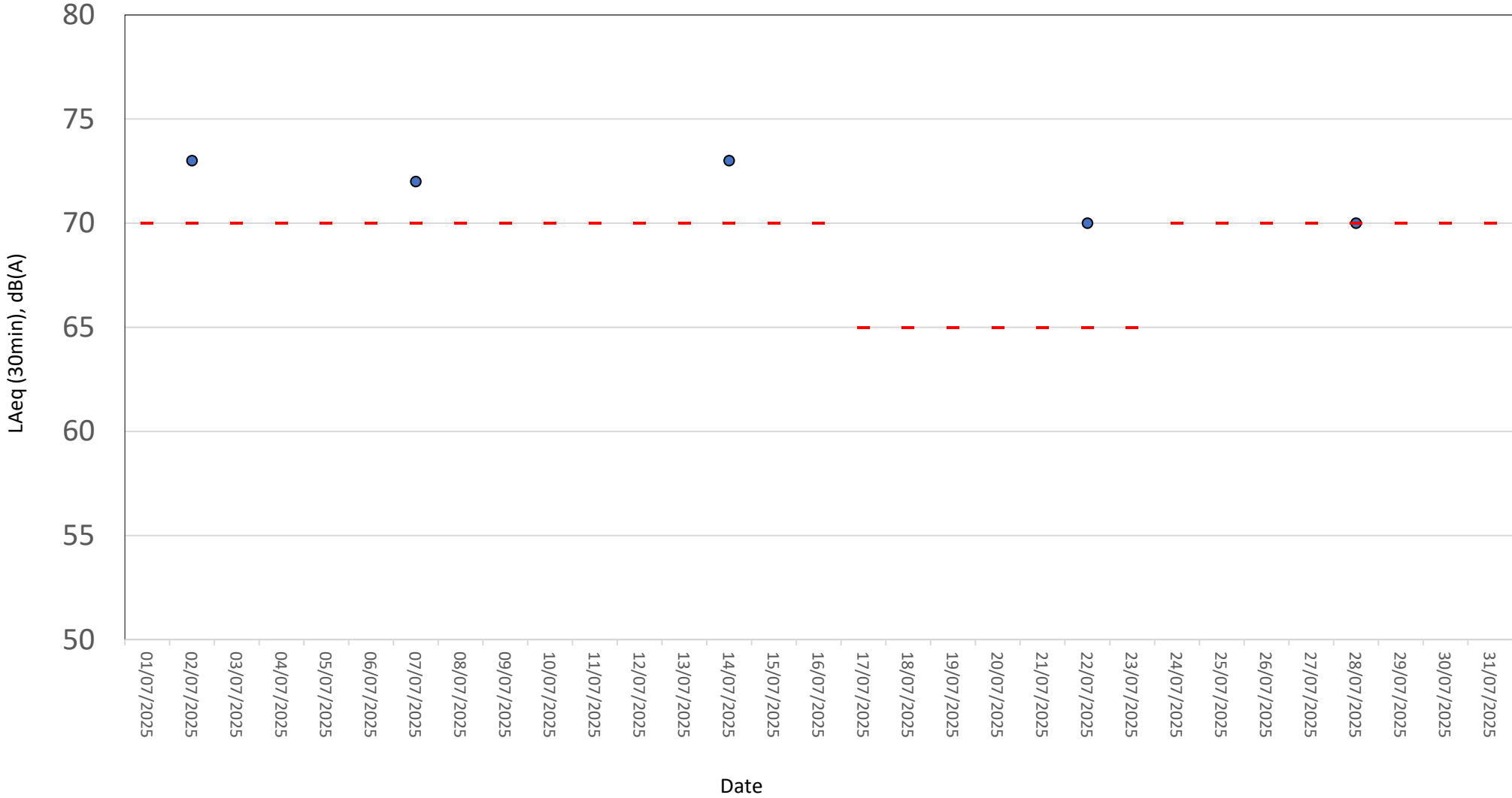
### Normal Weekdays Noise Monitoring Results at NM1(Leq, 30min)

● NM1 - Measured Noise Level    - Limit Level



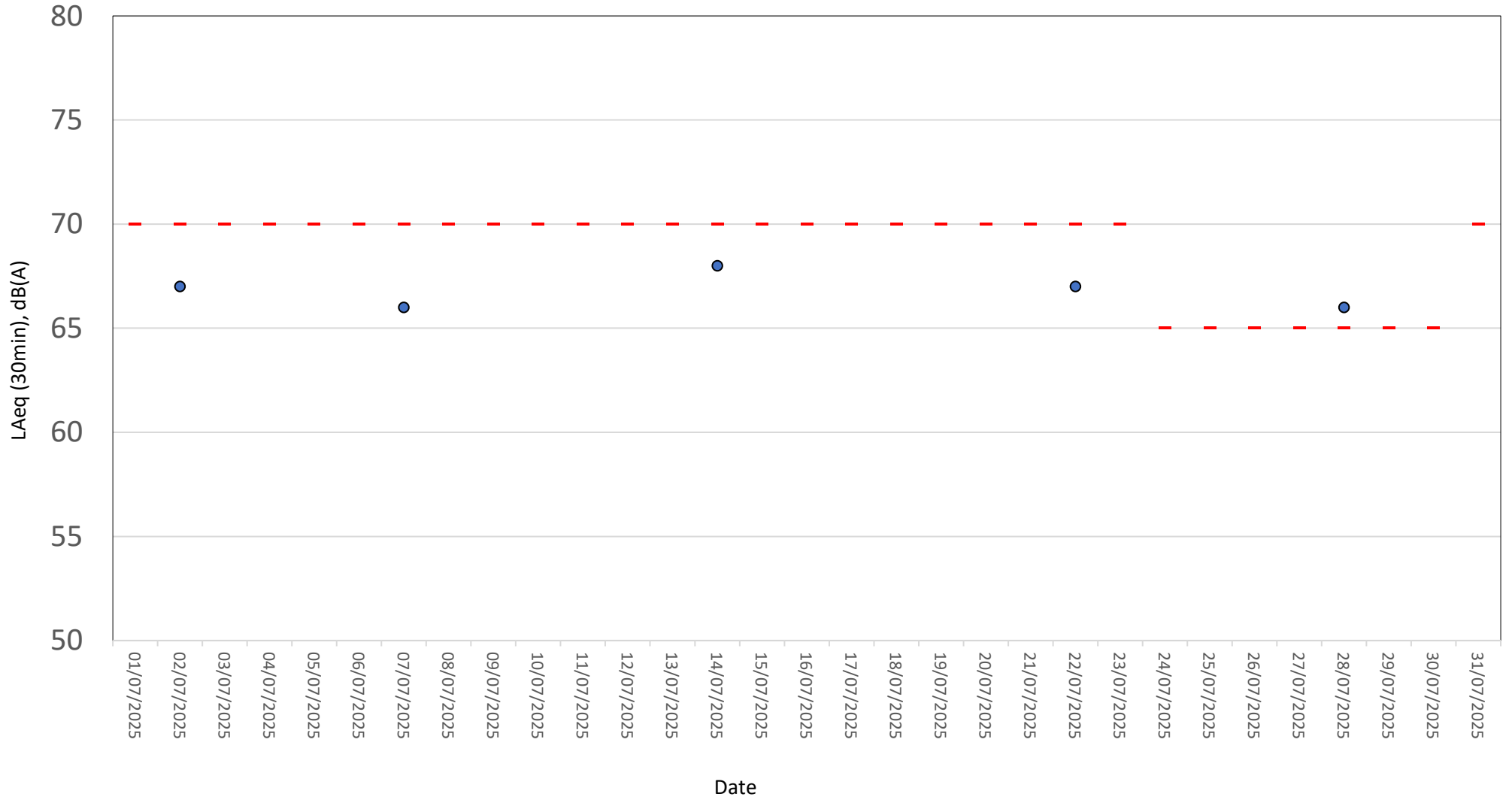
### Normal Weekdays Noise Monitoring Results at NM2b(Leq, 30min)

● NM2b - Measured Noise Level    - - - Limit Level



### Normal Weekdays Noise Monitoring Results at NM3(Leq, 30min)

● NM3 - Measured Noise Level    - - - Limit Level



# Appendix 8

(Waste Flow Table To be updated)

# Appendix 9

(Site Inspection Record to be updated)

# Appendix 10

2025		August				
MONDAY	TUESDAY	WEDNESDAY	THURSDAY	FRIDAY	SATURDAY	SUNDAY
28	29	30	31	01	02	03
04	05 Noise Monitoring (NM1, NM2b and NM3)	06	07	08	09	10
11	12 Noise Monitoring (NM1, NM2b and NM3)	13	14	15	16	17
18	19 Noise Monitoring (NM1, NM2b and NM3)	20	21	22	23	24
25	26 Noise Monitoring (NM1, NM2b and NM3)	27	28	29	30	31
01	02	Notes:				

# Appendix 11

There was no Notification of Environmental Quality Limits Exceedance in the reporting month.

# Appendix 12

## Environmental Complaints Log

Complaint Ref. No.	Date of Complaint Received	Received from	Received by	Aspect of Complaint	Date of Investigation	Investigation Summary & Conclusion	Date of Reply
C001_20240912	12 Sep 2024	EPD	ET	Noise	12, 19 & 26 September 2024, and 4, 10, 17 & 24 October 2024	<p>During the EPD liaison meeting on 12 September 2024, ER, IEC, ET and Contractor were noted that EPD received a complaint regarding construction noise on Sundays from the construction site of the Chai Wan Government Complex and Vehicle Depot in September 2024. Subsequently, this information was communicated from EPD to ET via email on 9 October 2024.</p> <p>In summary of the investigation, no significant noise nuisance was generated from the site activities conducted on 1 and 8 September 2024 (Sunday). Additionally, noise mitigation measures were implemented prior to September. In conclusion, there is no direct evidence showing that the complaint is related to the construction site of the Chai Wan Government Complex and Vehicle Depot.</p>	5 Nov 2024

Remarks:

1. "ER" equal to "Engineer's Representative"
2. "IEC" equal to "Independent Environmental Checker"
3. "ET" equal to "Environmental Team"
4. "EPD" equal to "Environmental Protection Department"

## Environmental Enquiries Log

Enquiry Ref. No.	Date of Enquiry Received	Received from	Received by	Aspect of Complaint	Date of Investigation	Investigation Summary & Conclusion	Date of Reply
NA	NA	NA	NA	NA	NA	NA	NA

Remarks:

1. "ET" equal to "Environmental Team"
2. "EPD" equal to "Environmental Protection Department"
3. "NA" equal to "Not Applicable"

## Cumulative Statistics on Complaints

Aspects	Cumulative No. Brought Forward	No. of Complaints during reporting period	Cumulative Project-to-Date
Air Quality	0	0	0
Noise	1*	0	1*
Water Quality	0	0	0
Waste Management	0	0	0
Total	1*	0	1*

Remarks:

1. \*Equal to non-project related after the investigation.

**Prepared by:**

Aurecon Hong Kong Limited  
Unit 1608, 16/F, Tower B, Manulife Financial Centre,  
223 – 231 Wai Yip Street, Kwun Tong,  
Kowloon Hong Kong S. A. R.  
T: +852 3664 6888

**aurecon**

*Bringing ideas  
to life*

F: +852 3664 6999

E: [hongkong@aurecongroup.com](mailto:hongkong@aurecongroup.com)